

SERVICE KIT: 763-966V

SERVICE PUBLICATION:

MODEL: PA 28-181 28-7690001 and up
 PA 28R-200 28R-7235001 to 28R-7635545 incl.
 PA 28-201T 28-7921001 and up
 PA 28R-201 28R-7737001 to 7837317 incl.
 PA 28R-201T 28R-7703001 to 7803373 incl.
 PA 28RT-201 28RT-7918001 and up
 PA 28RT-201T 28RT-7931001 and up
 PA 28-235 28-7210001 to 28-7710089
 PA 28-236 28-7911001 and up
 PA 44-180 44-7995001 and up
 PA 44-180T 44-8007001 and up
 PA 28-180 28-7205001 to 7505259 incl.
 PA-28-151 28-7415001 to 7715314
 PA-28-161 28-7716001 and up

		INSTR. ASSY. SUB ASSY. KIT		DRAFTSMAN	<i>Schiavone</i>	7/19/79				
	Δ	LTR		DESIGN ENGR.						
	JBC	BY								
	25 JULY 79	DATE		PROGRAM ENGR.	N. HOCKENHULL	7-20-79				
		APPO.								
	B	LTR	REVISION	SCALE	NONE	LAST SECTION	BT	LAST VIEW	A-A	
	L.G.K.	BY		DAL. WT.	ARM	ACT. WT.	WT./SIGN			
	3/2/87	DATE		TOL. .XXX**-.810.XX**-.820.X**/-18						
	N.P.	APPO.		MANUFACTURING PRACTICES PIPER SPEC 9						

THIS DRAWING IS THE PROPERTY OF THE PIPER AIRCRAFT CORP. AND ITS POSSESSION BY UNAUTHORIZED PERSONS SHALL NOT BE CONSTRUED AS PERMISSION TO REPRODUCE FOR SALE IN WHOLE OR IN PART, ANY DEVICES SHOWN THEREON.

PIPER AIRCRAFT CORP.
 VERO BEACH, FLORIDA

DOA	<i>[Signature]</i>	STRUCTURES	7/20/79
MANUFACTURING			
MATERIALS			

AFT SHOULDER HARNESS KIT

KIT NO: 763 966V

SH	1	78843	B
OF	6		

2	487-560	Stud	XX-10362-12
2	415-370	Screw	MS27039-4-13
6	415-308	Screw	MS27039-0808
6	404-910	Nut	MS20365-832C
2	404-888	Nut	MS20365-428C
2	407-585	Washer	AN960-416L
2	407-565	Washer	AN960-416
6	407-563	Washer	AN960-8
2	452-679	Reel Assy	PS50039-4-19
6	494-001	Washer	PS10016-4
6	419-681	Screw	PS10012-4
1	99920-03	Cover Assy	
1	99920-02	Cover Assy	
2	96791-00	Fitting	
2	78557-02	Spacer	

QTY.	PART NO.	PART NAME	DESCRIPTION
------	----------	-----------	-------------

PIPER AIRCRAFT CORPORATION VERO BEACH, FLORIDA		AFT SHOULDER HARNESS KIT	
---	--	---------------------------------	--

KIT NO. 763 966V	SHT. 2	DWG. NO. 78843	B
-------------------------	---------------	-----------------------	----------

INTRODUCTION:

These instructions describe the installation of the AFT Shoulder Harnesses 452-679 for use with the Aft Seat Lap Belts.

Installation of Shoulder Harness.

- 1) See Sht. 4, Fig 1 & 2 for area to be worked. Left hand side shown.
- 2) Cut out headliner and remove insulation, see Sht 4, Fig 2.
- 3) Remove section of headliner support. See Sht 4, Fig 2.
- 4) Attach fitting 96791-00 to existing holes on aft channel using hardware as shown. Then, using fitting as a guide, drill a .250 hole thru outer skin. See Sht 4 & 5, Fig 2 & 3.
- 5) Assemble shoulder harness and locate as indicated using hardware as shown. See Sht 5, Fig 3 & Section A-A.

Installation of Cover.

- 6) Remove Coat Hanger Hook from above shoulder harness installation.
- 7) Slide harness buckle thru cover panel 99920-02, place cover over cut out, reinstall coat hook thru hole provided on cover. See Sht 6, Fig 4. Check that no insulation can be drawn into webbing.
- 8) Insure proper alignment of cover and drill .166 holes in three places using cover as a template. Secure with fasteners provided. See Sht 6, Fig 4.
- 9) When installation is complete, check for free operation, reel must retract webbing to stowed position.
- 10) For harness storage attach see Fig 5, Sht 6. Remove existing fastener and replace with 487-560 stud.
- 11) Instructions are identical for the right hand side except 99920-03 cover is to be used.
- 12) Make appropriate log book entry.

PIPER AIRCRAFT CORPORATION
VERO BEACH, FLORIDA

AFT SHOULDER HARNESS KIT

763-966V

SHT 3

DWG. NO. 78443

B

Aft Shoulder Harness Location
See Fig 2

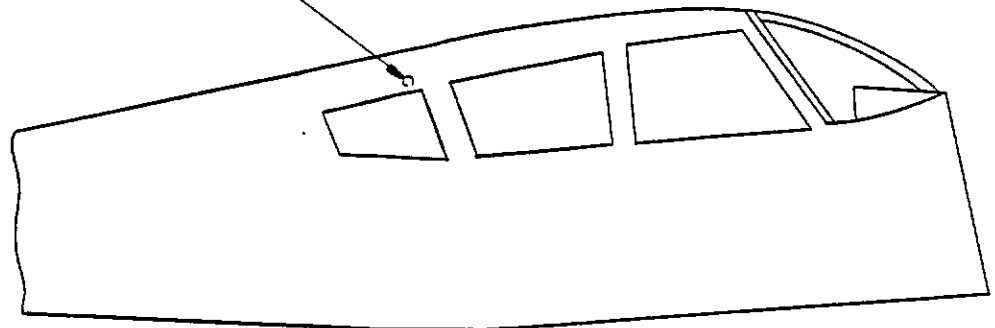


FIG-1

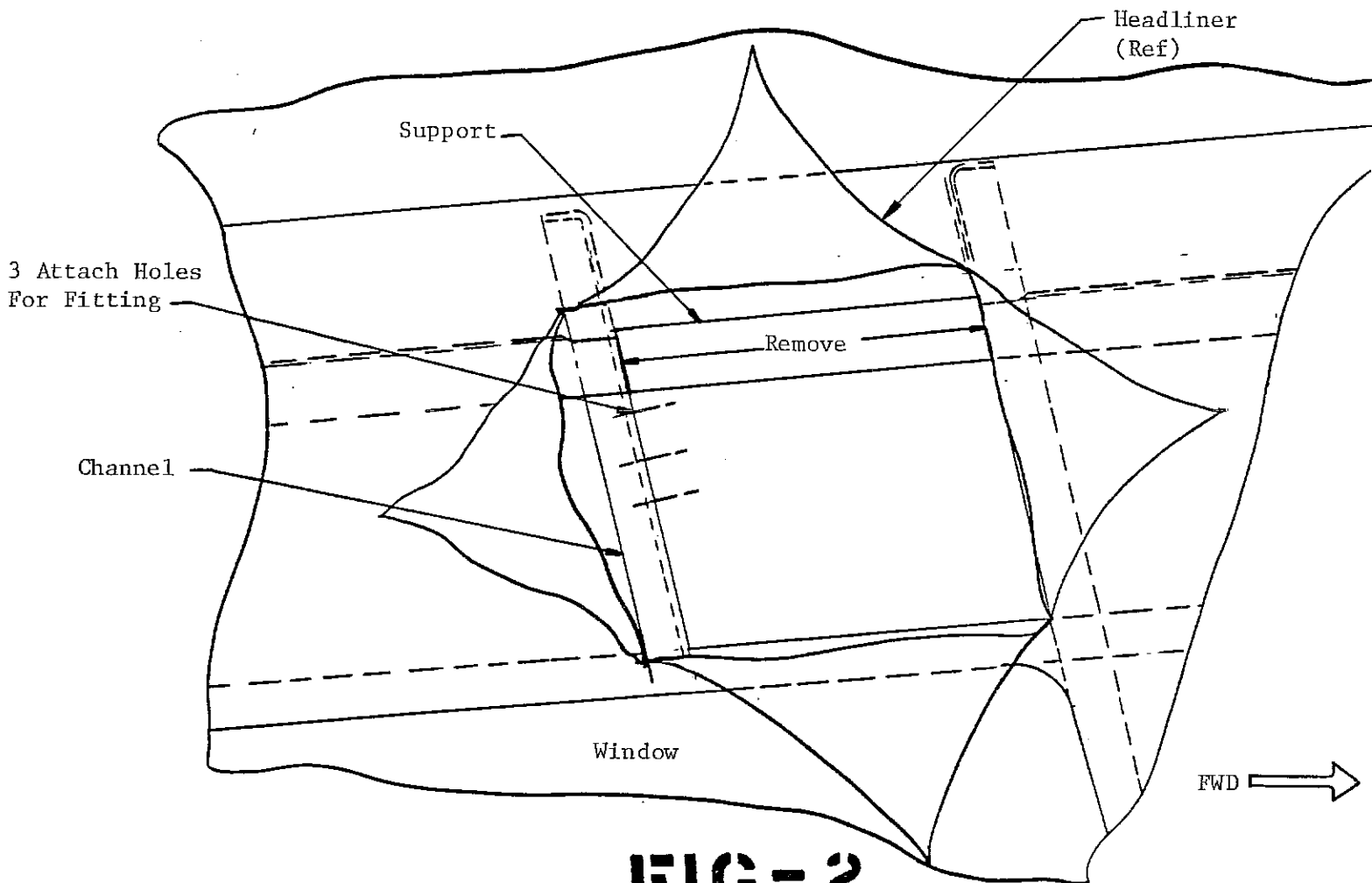
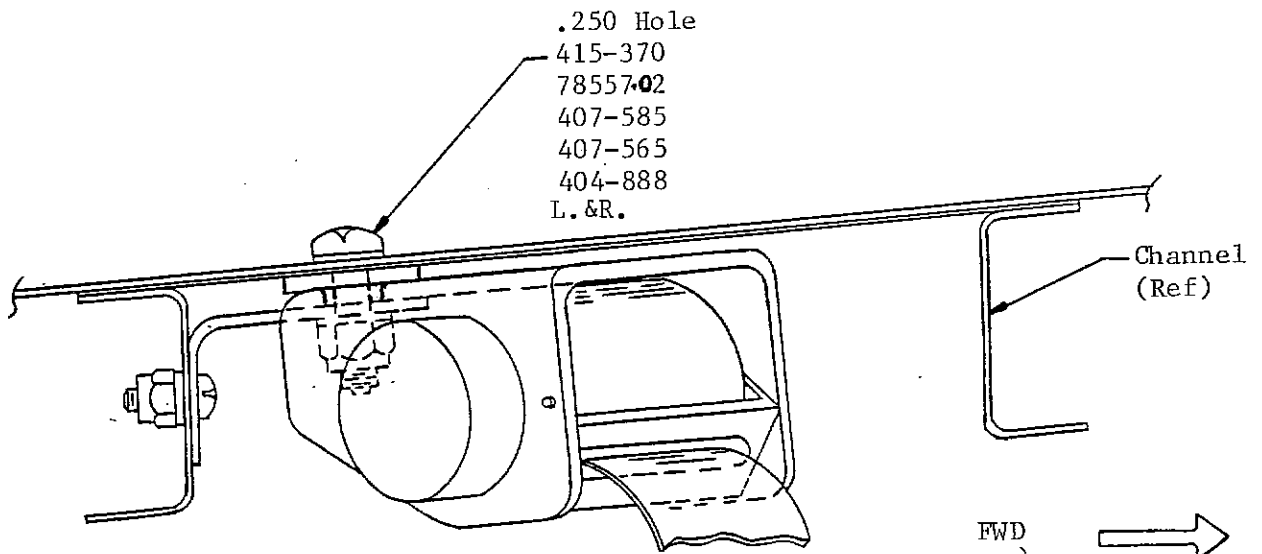
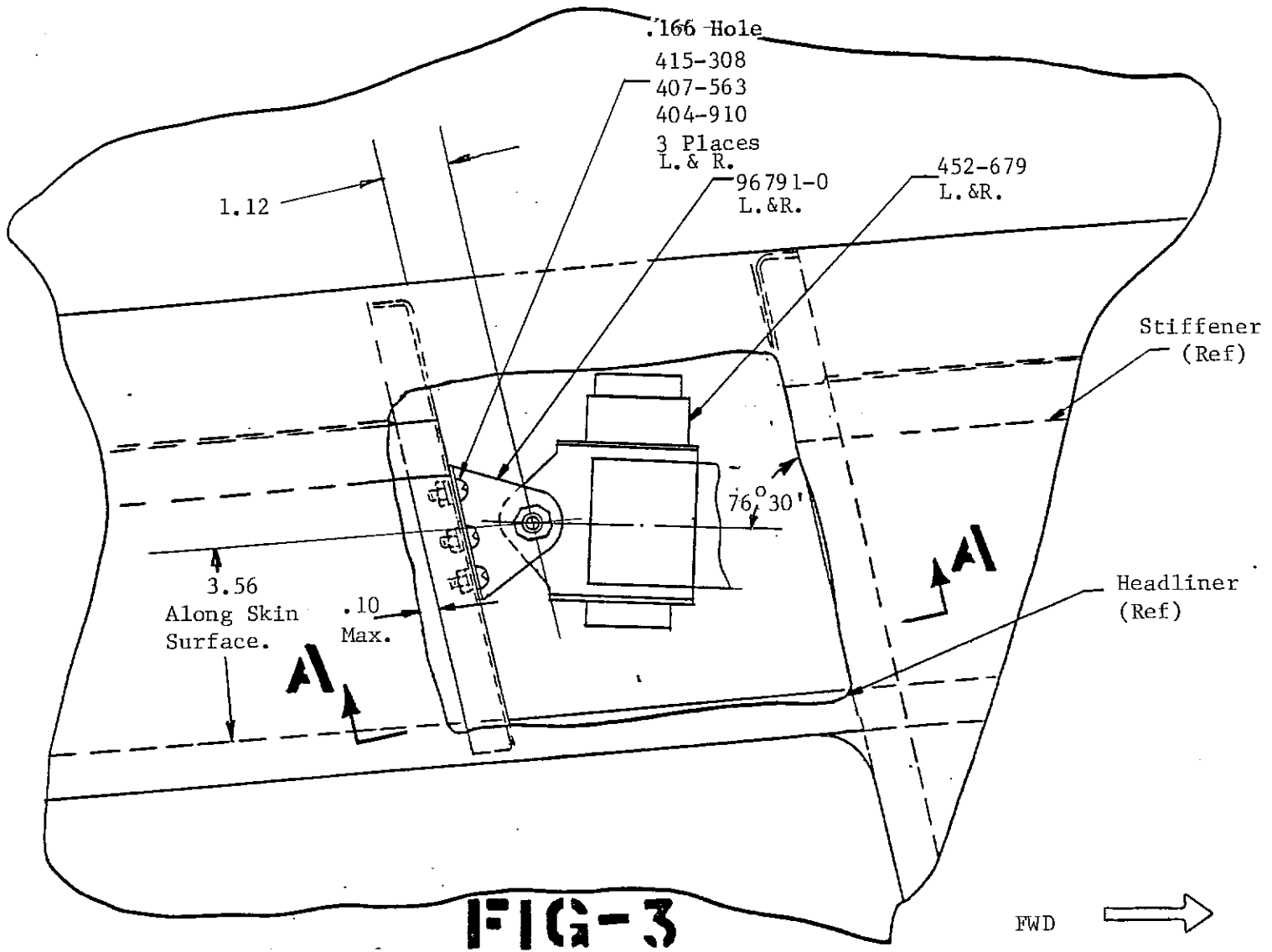


FIG-2



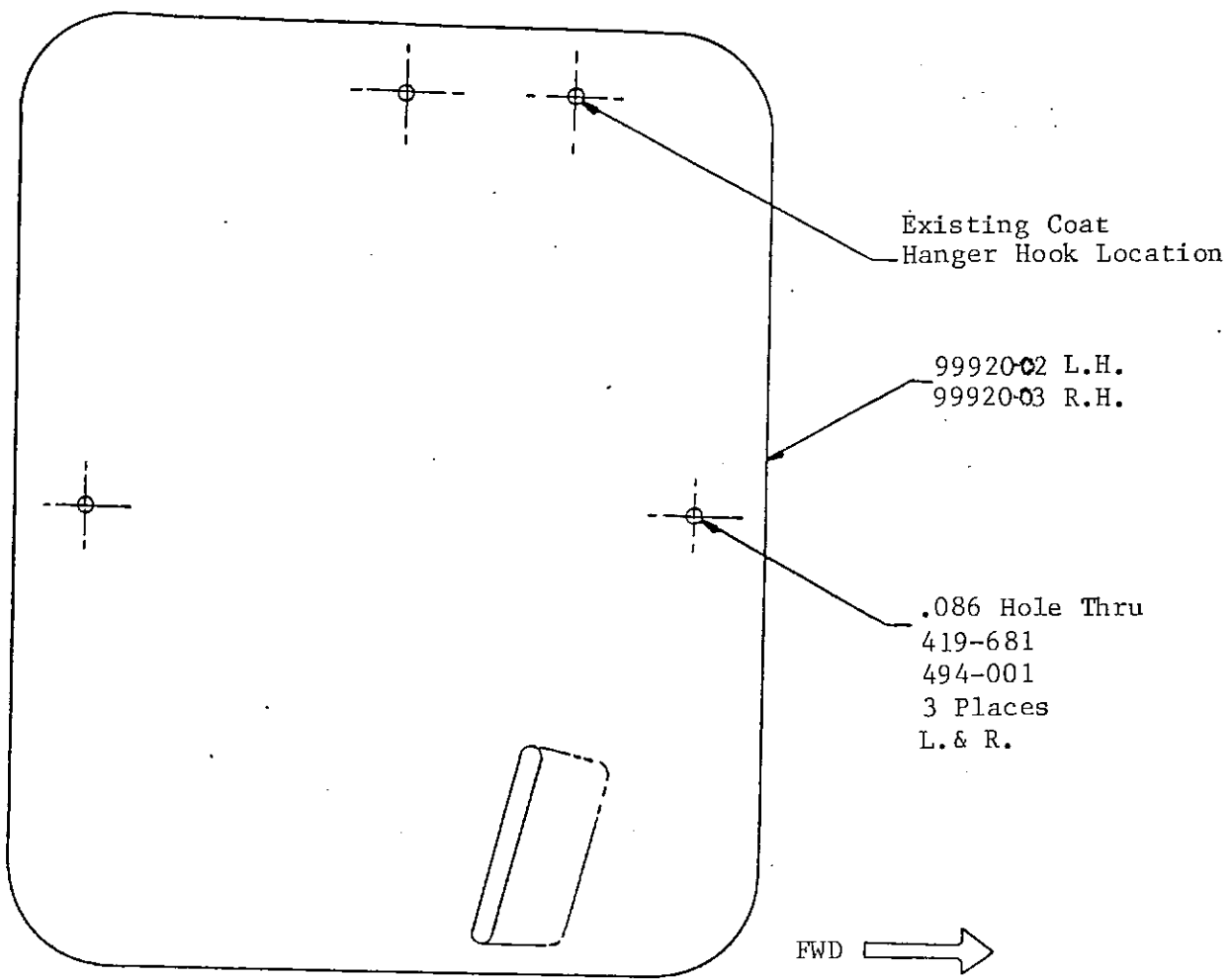
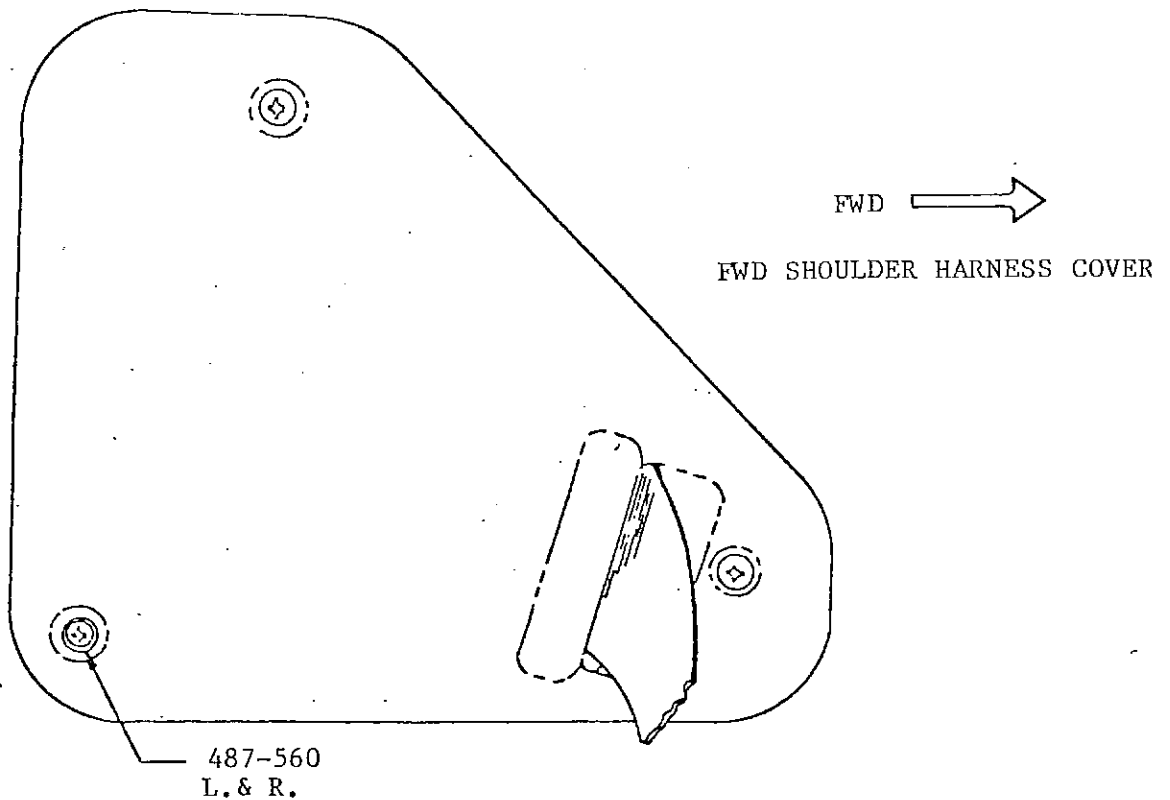


FIG-4

AFT SHOULDER HARNESS COVER



FWD SHOULDER HARNESS COVER